



GroundMatz™ HD mats are designed to protect surfaces from damage caused by heavy equipment, ideal for construction sites and events.

Made from durable high-density polyethylene (HDPE), they prevent soil erosion and minimise environmental impact by distributing weight effectively. With a non slip surface and lightweight design, GroundMatz™ HD ensure safety while being easy to handle and install.



Ground Mats

Features

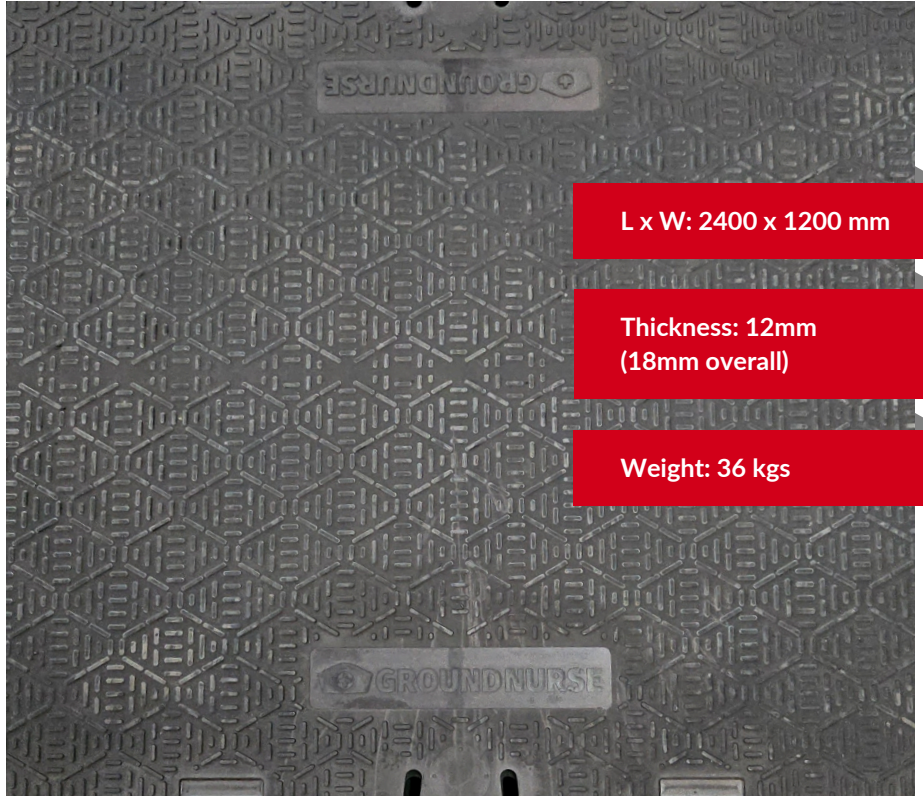
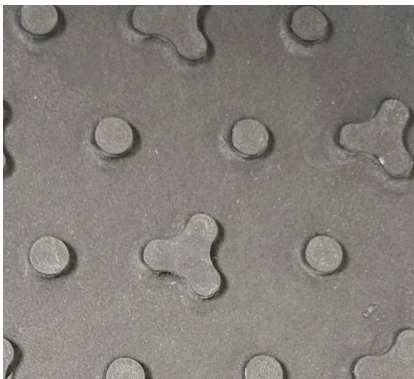
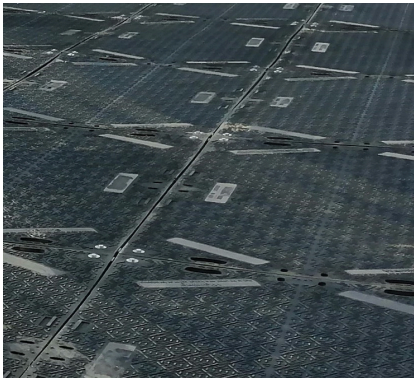
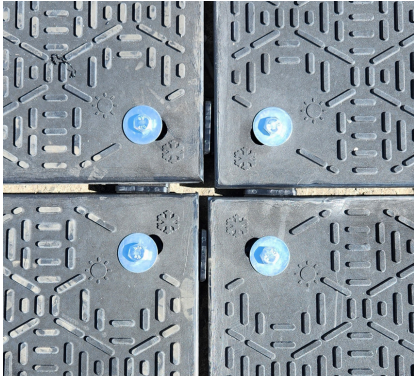
- **Sturdy Construction:** Built from durable materials for long-lasting use.
- **Non-Slip:** Dual traction pattern for enhanced grip.
- **Heavy Load Capacity:** Supports 50-80* tonnes per axle.
- **Lightweight:** Easy to handle and install.
- **Easy Maintenance:** Simple to clean and maintain.
- **Matstor™ Compatible:** Organises and transports GroundMatz™ mats and ensures quick access.
- **Connectable:** Linkable for larger work areas.



This item is made from 100 % recycled material



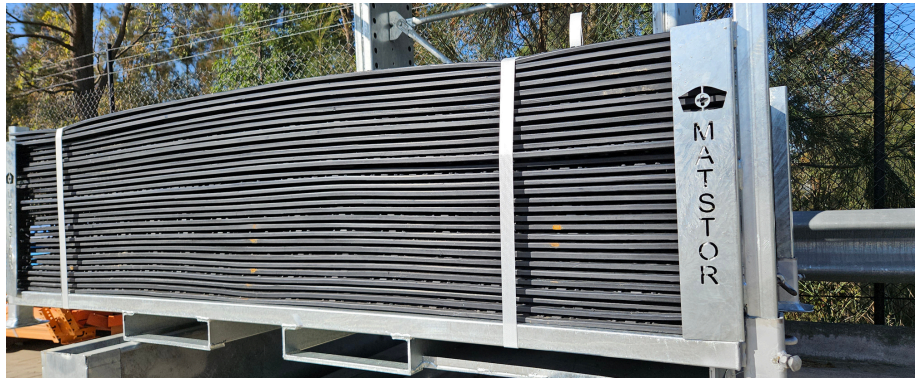
*Ratings given are indicative only & are dependant on soil bearing capacity, refer user manual for more information regarding CBR



L x W: 2400 x 1200 mm

Thickness: 12mm
(18mm overall)

Weight: 36 kgs



At Ground Nurse®, we promise to deliver advanced ground care protection systems that enhance safety and efficiency in construction and mining. With our motto, 'Protection from the Ground Up,' we are committed to providing reliable, innovative solutions that not only meet the highest standards of quality but also support sustainable practices, ensuring long-term environmental and operational benefits for your projects.

✉ SALES@GROUNDNURSE.COM.AU

☎ [1300 299 300](tel:1300299300)

🌐 GROUNDNURSE.COM.AU

Protection from the ground up.

