

10600

GroundMatz™ Lite

GroundMatz™ Lite are durable, flexible mats made from 100% recycled LDPE, perfect for construction sites and events.

With a non-slip surface that enhances safety and prevents soil compaction, they evenly distribute weight. Lightweight and easy to transport, they allow for quick setup of temporary roadways and work platforms.



Ground Mats



Features

- **Sturdy Construction:** Built from durable materials for long-lasting use.
- **Non-Slip:** Dual traction pattern for enhanced grip.
- **Heavy Load Capacity:** Supports 10-20* tonnes per axle.
- **Lightweight:** Easy to handle and install.
- **Easy Maintenance:** Simple to clean and maintain.
- **Matstor™ Compatible:** Organises and transports GroundMatz™ mats and ensures quick access.
- **Connectable:** Linkable for larger work areas.



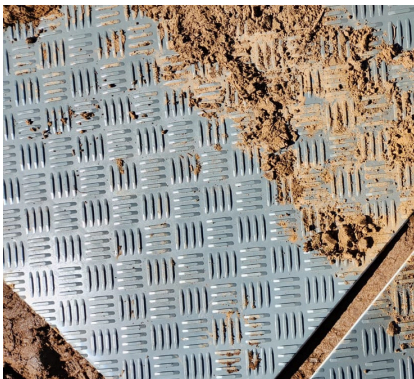
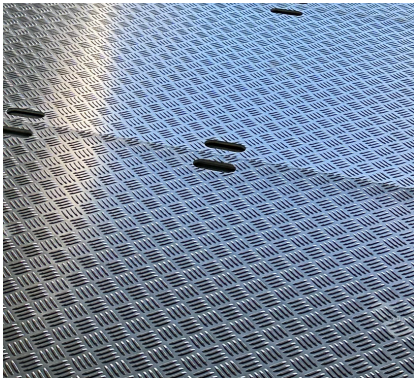
This item is made from 100 % recycled material



*Ratings given are indicative only & are dependent on soil bearing capacity, refer user manual for more information regarding CBR

Protection from the ground up.

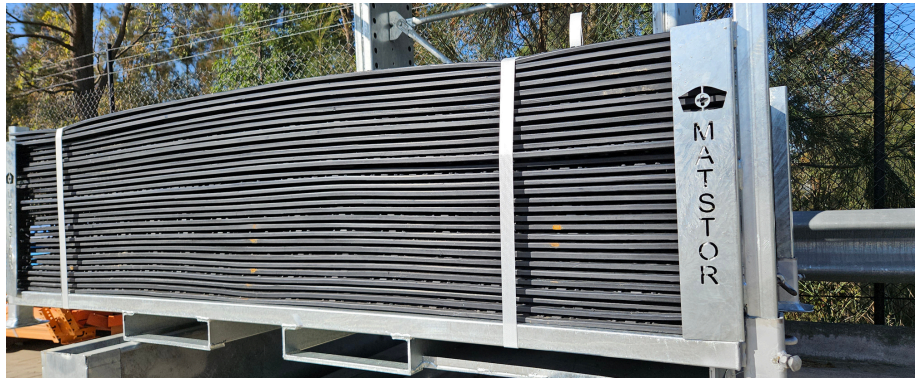




L x W: 2400 x 1200 mm

Thickness: 12mm

Weight: 31 kgs



At Ground Nurse®, we promise to deliver advanced ground care protection systems that enhance safety and efficiency in construction and mining. With our motto, 'Protection from the Ground Up,' we are committed to providing reliable, innovative solutions that not only meet the highest standards of quality but also support sustainable practices, ensuring long-term environmental and operational benefits for your projects.

✉ SALES@GROUNDNURSE.COM.AU

☎ [1300 299 300](tel:1300299300)

🌐 GROUNDNURSE.COM.AU

Protection from the ground up.

