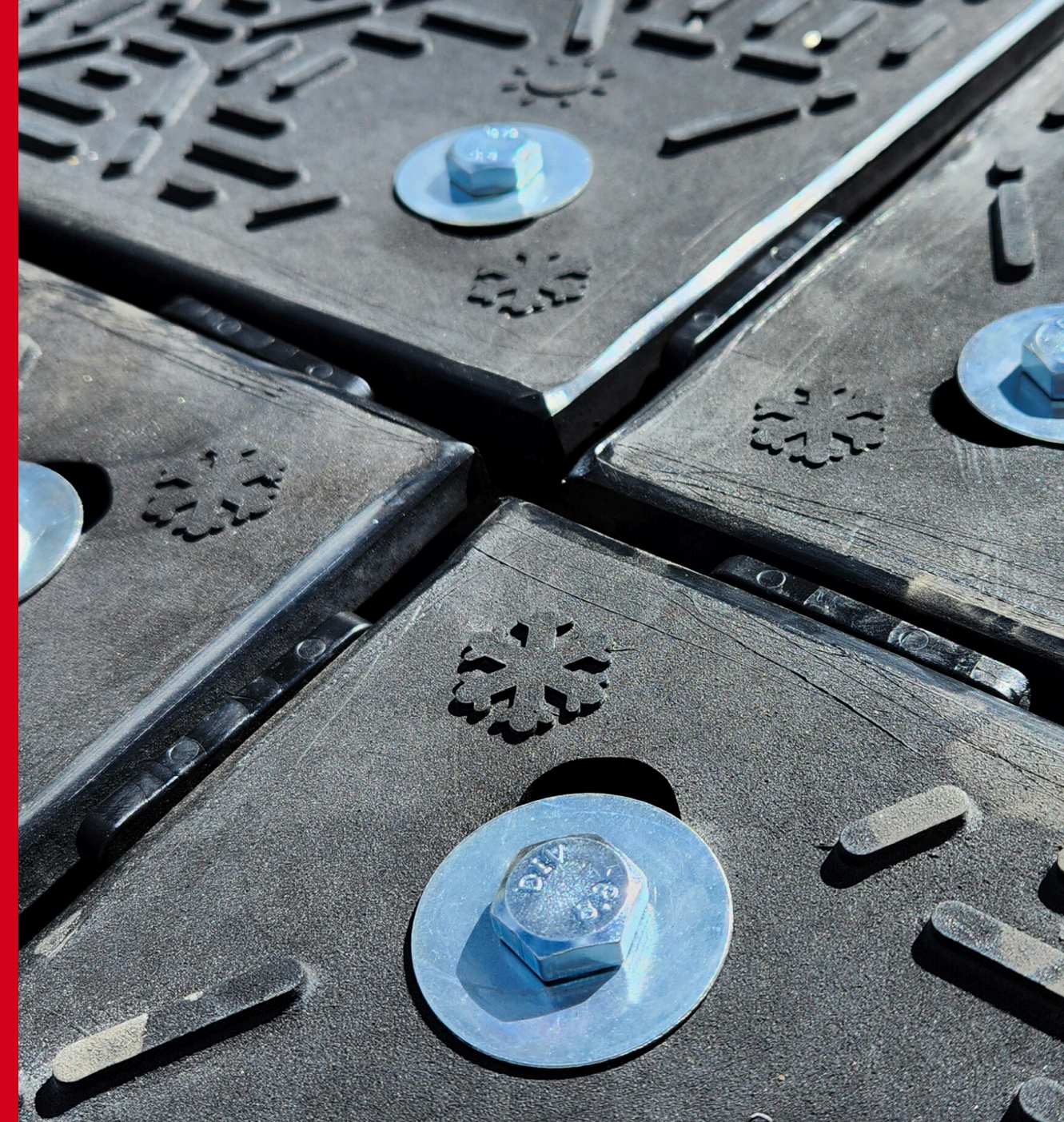
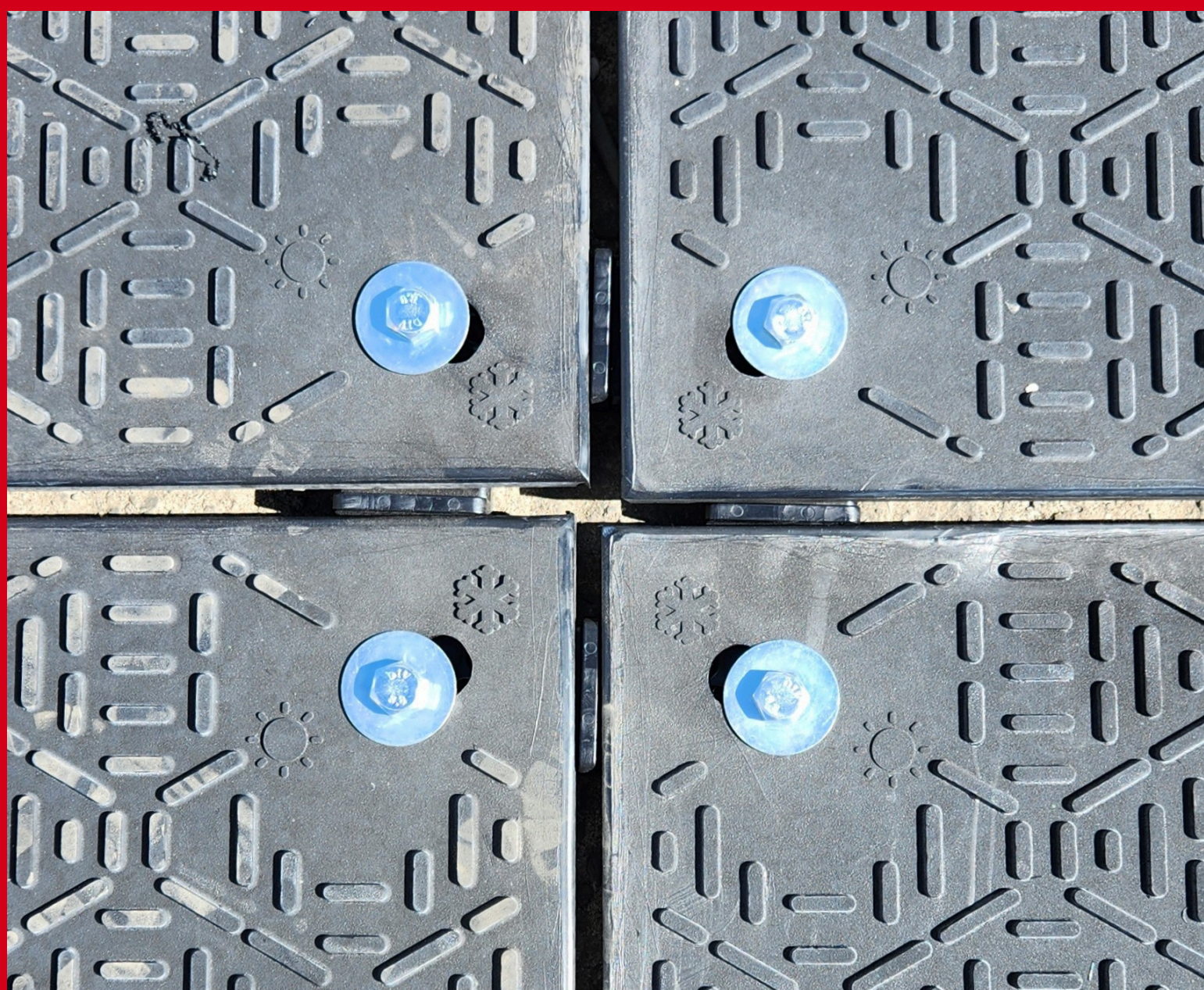


FOUR WAY CONNECTORS

Add extra security to your ground protection mats. Elongated holes in the mat allow movement according to temperature

CONNECTOR SIZE

185MM X 185MM X 22MM



SPECS.

1 CONNECTORS PER 4 MATS

MOULDED PLASTIC & METAL

M10 FLANGE HEAD BOLTS

Although the mats grip the ground firmly underneath heavy vehicles, in some circumstances like steep inclines, or for added security, you may wish to connect mats together. When necessary, our ground protection mats can be connected together by linking the connectors into the connector holes in each corner of the mat or on the sides of the mat to create a temporary road.

